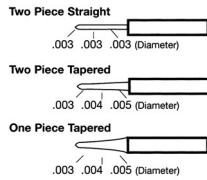


Your Questions Answered

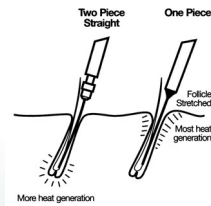
Q: Why use a two piece needle?

A: A two piece needle gives you flexibility and a needle with a uniform diameter. When you choose a needle of a specific size, it will remain that size along the whole of its length. One piece needles differ in that they taper and become thicker towards the shank.



Q: Why do I need flexibility?

A: As an electrologist, two of your senses allow you to perform well. Your sight which directs you to the follicle opening and touch which lets you know if your probe is entering the follicle properly and also when it has reached the papilla. The flexibility of a needle will help you feel your insertion and allow it to follow the shape of the follicle. Rigid one piece needle does not allow it.

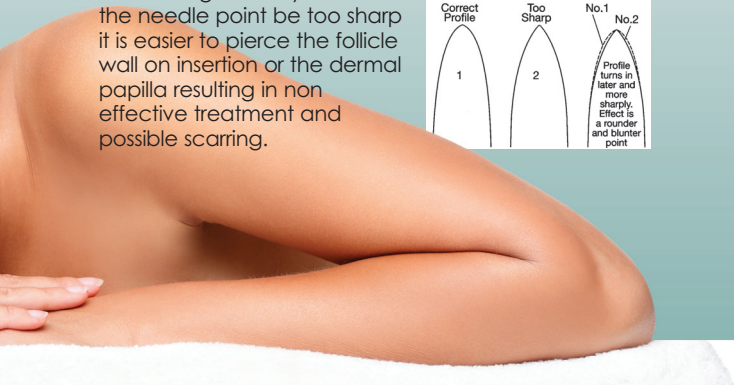
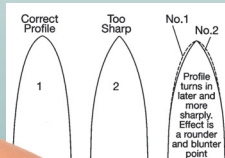


Q: Why use a highly polished needle?

A: A highly polished smooth Carlton Professional needle allows easier insertion into the follicle, a smooth passage as it passes down the follicle giving client comfort. Tissue damage is decreased and dissipation of current is minimal allowing full current to be produced at the needle tip where it is required. This is due to the fact that the current will flow to the point of least resistance.

Q: Does the shape really matter?

A: Simple answer yes! Tests have shown that with a micro-polished rounded point current intensity can be lowered significantly. Should the needle point be too sharp it is easier to pierce the follicle wall on insertion or the dermal papilla resulting in non effective treatment and possible scarring.



- Client comfort
- Available in F or K shank
- Rounded tip
- Low cost protection
- Two piece flexibility
- Obviously the best
- Non allergenic



THE CARLTON GROUP

Carlton House • Commerce Way • Lancing
West Sussex • BN15 8TA • UK
Tel: +44 (0) 1903 761 100 • Fax: +44 (0) 1903 751 111
E-mail: info@thecarltongroup.co.uk • Web: www.thecarltongroup.co.uk



ESSENTIAL TIPS FROM CARLTON PROFESSIONAL



NON ALLERGENIC



2 PIECE DESIGN



CLIENT COMFORT



AFFORDABLE QUALITY



YOU DESERVE THE BEST!



The Turning Point

The first disposable epilation needle was introduced to the beauty industry in 1980. The main reason for the interest in them was the possible risk of cross infection from AIDS and Hepatitis B. There are now a few choices of brands on the market but we feel at Carlton Professional you owe it to your client to offer the best.

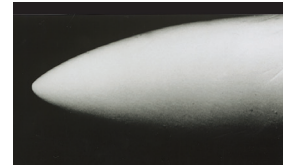
Since 1989, the ultimate in needle design from Carlton Professional has been at your disposal. A sterile, disposable epilation needle of flexible two piece construction with a scientifically engineered tip designed to give results that the professional electrologist demands and the client expects.

Carlton Professional needles are manufactured in a modern, purpose built British factory utilising the latest hi-tech machinery.

The needles are diamond drawn from austenitic stainless steel, the steel used for hypodermic needles and surgical instruments, then beautifully finished with a specially developed final polishing process. When the needle is inserted into the shank it is crimped evenly on all three sides to give maximum assurance that the two pieces will not separate. Each protective pack is subject to an internationally approved level of Gamma radiation. The specified dosage of 24k Gy turns the indicator red, guaranteeing the sterility of a Carlton Professional needle for five years from the date of irradiation.



When purchasing an epilation needle, we know how difficult a decision it is. Brand X or Brand Y, the controversy goes on. As the majority of differences between the brands are not visible to the naked eye, perhaps the following facts and photographs will help to show that in choosing Carlton Professional epilation needles you have made the right decision both for you as a professional operator and for your client who deserves comfort and good results.



Carlton Professional

Our two piece stainless steel needle benefits from a far stronger crimp technique than other similar types which eliminates accidental separation. The photograph shows to good effect the superb shaping of the micro-polished tip that has taken us such a long time to perfect (albeit well worth the time it has taken!).

A good quality needle should have a smooth polished surface with a well defined, rounded but not pointed tip. During epilation, the needle performs two functions; firstly it acts as a probe so therefore it needs to slide smoothly and easily into the follicle. Secondly, it acts as an electrode allowing the current to flow evenly to its tip in order to perform its task.

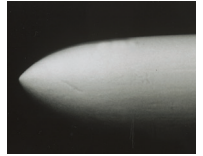
The correct choice of needle therefore plays an important part in the successful destruction of the lower follicle and dermal papilla.



Some Comparisons in Needle Technology

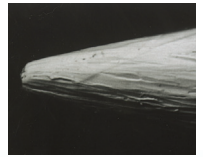
One Piece Needle

This is a different type of needle being manufactured from one piece of stainless steel tapering to a point. The finish of the needle is good but the shape may cause problems for the operator as the thickness increases along the length and is less flexible in use.



A leading brand

The picture shows the rather sharply pointed shape and cut-off point, altogether what appears to be a poorly finished product without any apparent final polishing process. This is quite an unsophisticated needle by today's standards.



Another leading brand

The photograph illustrates the particularly sharp point and the apparent lack of a final polishing process. It would appear that a rough, textured finish tends to attract and hold microscopic particles of potentially infectious organisms which could be carried into the follicle.



Carlton and Leading Brand

To avoid any confusion that may occur when comparing photographs which may have been taken in different light or under different conditions, we asked a leading photographic lab to take a set of controlled photographs to illustrate the differences in shape, style and finish of the various needle points. It is interesting to note how the high polish on the CARLTON needle reflects the light whereas the multi-faceted finish on the other leading brand absorbs the light and throws some rather interesting shadows.

